











ARAPEEN OHV TRAIL SYSTEM MAP LEGEND

-  ATV / UTV / 4x4 Route
-  ATV / UTV Route
-  ATV Route (50' Trail Width)

-  Easiest
-  More Difficult
-  Most Difficult
-  Staging Area
-  Campground
-  GPS Point
-  Main Highway
-  Main Forest Road
-  Forest Road
-  Stream
-  Reservoir or Lake
-  State or Private Property
-  Forest Boundary

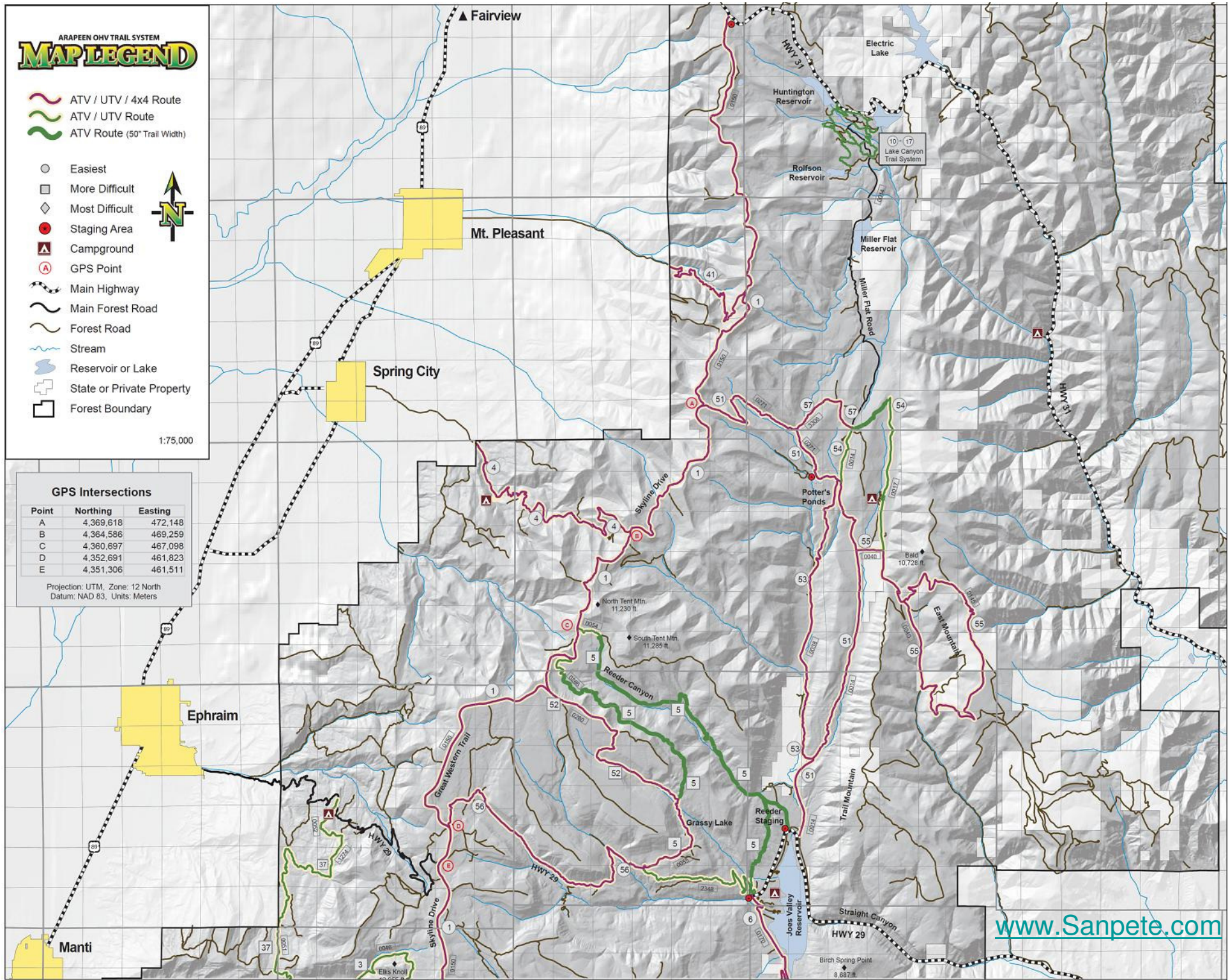


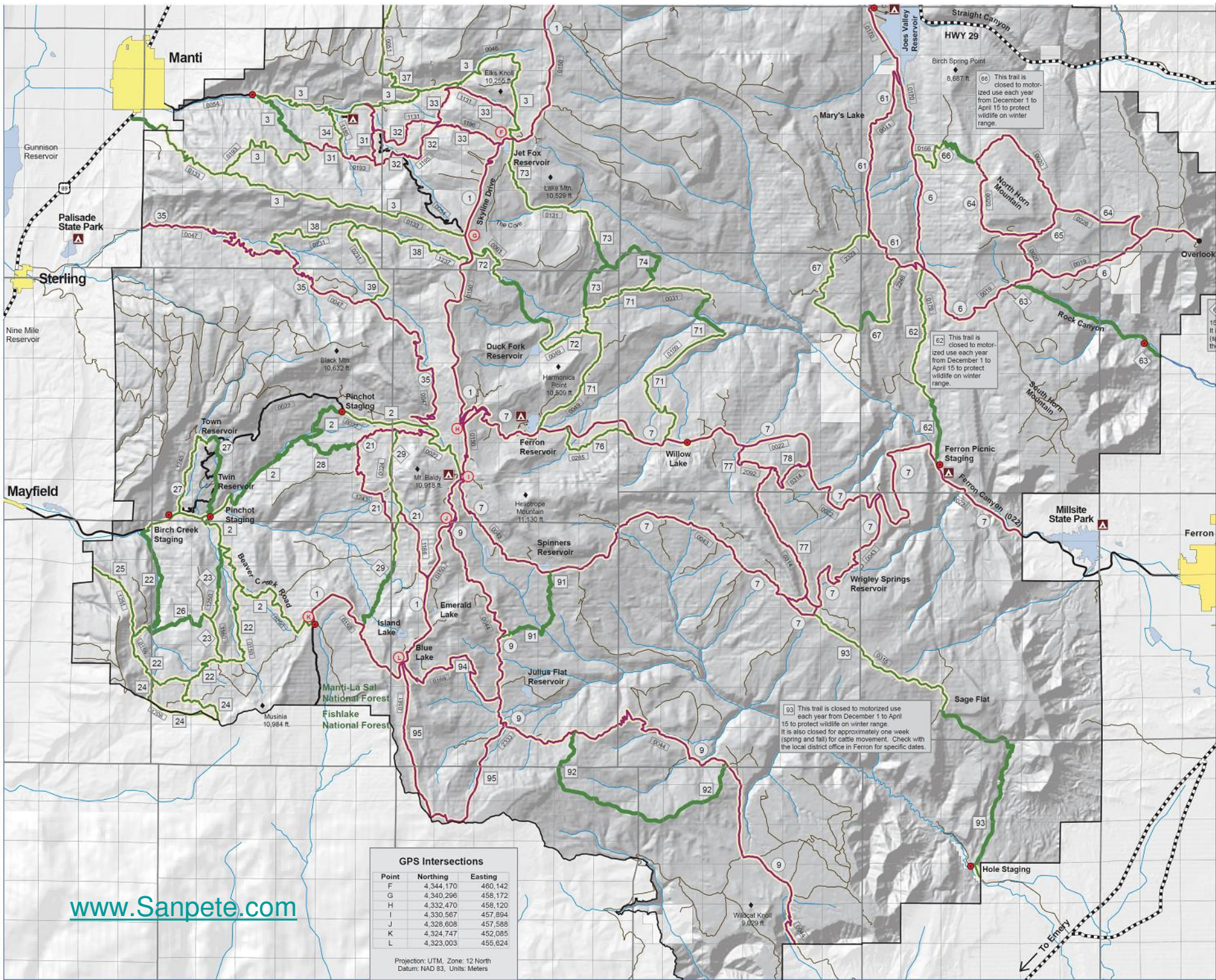
1:75,000

GPS Intersections

Point	Northing	Eastings
A	4,369,618	472,148
B	4,364,586	469,259
C	4,360,697	467,098
D	4,352,691	461,823
E	4,351,306	461,511

Projection: UTM, Zone: 12 North
Datum: NAD 83, Units: Meters





66 This trail is closed to motorized use each year from December 1 to April 15 to protect wildlife on winter range.

62 This trail is closed to motorized use each year from December 1 to April 15 to protect wildlife on winter range.

93 This trail is closed to motorized use each year from December 1 to April 15 to protect wildlife on winter range. It is also closed for approximately one week (spring and fall) for cattle movement. Check with the local district office in Ferron for specific dates.

GPS Intersections

Point	Northing	Easting
F	4,344,170	460,142
G	4,340,296	458,172
H	4,332,470	458,120
I	4,330,567	457,894
J	4,328,608	457,588
K	4,324,747	452,085
L	4,323,003	455,624

Projection: UTM, Zone: 12 North
Datum: NAD 83, Units: Meters

www.Sanpete.com